

Blood Bag Tube Sealer



BK-HSI

BK-HSII

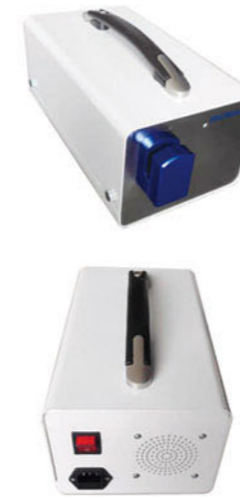
Feature:

- * Microcontroller control, instrument control programmed, instrument automatically adjusts voltage.
- * Heat sealing without hemolysis, using imported components to ensure instrument reliability.
- * The machine feet have suction cups, suitable for use in blood collection vehicles.
- * Automatic heat sealing tube, firmly sealed, easy to separate at the heat sealing point.
- * Splash protection: transparent splash protection film to prevent blood from splashing into the operator's eyes during hot sealing, ensuring the safety of operators.
- * Convenient cleaning: The white safety cover allows for easy disassembly and cleaning without the need for specialized tools.
- * Heat sealing voltage: automatic voltage regulation.

Technical Parameters:

Model	BK-HSI	BK-HSII
Material	aluminium alloy	stainless steel
Output Voltage	automatic voltage regulation	
Sealing Type	automatic heat sealing	
Sealing Time	0.1-9.9 seconds	
Tube Size	plastic pipe with an outer diameter of 4mm and a wall thickness of ≤ 1mm	
Power Supply	AC220V, 50Hz	
External Size(L*W*H)(mm)	300*200*160mm	300*180*150mm
Packing Size(L*W*H)(mm)	470*320*260mm	
Net Weight(kg)	8kg	7kg
Gross Weight(kg)	9kg	8kg

Blood Bag Tube Sealer



Application:

The blood bag tube sealer performs thermal sealing for catheters of medical PVC blood collection bags. It is widely used in blood transfusion departments, blood stations, blood banks and medical research departments of hospitals at all levels.

Features:

- * It adopts a transistor high-frequency generator with filter shielding structure to lower radiation level effectively.
- * Multi-stage voltage protection is configured; the circuit is mature and stable, granting long service life.
- * The whole heating procedure is fully automatic, requiring no manual setting of heating duration.
- * Ergonomic design, compact size and light weight enable easy relocation and simple operation.
- * No preheating is needed for instant heat sealing, perfectly applicable to tube sealing in mobile blood collection vehicles.
- * A positioning guide groove is reserved on the sealing head, allowing easy detachment after heat sealing.
- * Equipped with reliable anti-splash protection structure, the device features easy-to-clean design.
- * The sealing head is coated with ceramics, featuring a smooth surface to avoid hemolysis.
- * Wide input voltage design fits power grids worldwide and is compatible with standard national plugs.

Technical Parameters:

Model	BK-BTS1
Sealing Time	1~2.5s
Frequency	40.68MHz
Diameter of Tube	Applicable for PE/PVC tubes, outer diameter 2~6mm, wall thickness≤1.5mm
Power Supply	AC110V~260V, 5A
Consumption	Work: 150W; Standby: 3W
External Size (W*D*H)	180*355*175mm
Package Size (W*D*H)	260*470*280mm
Net/Gross Weight	6.5kg/7kg

Blood Plasma Extractor



Applications:

It is used to extract blood components from centrifuge bags. It is widely used in hospitals, blood stations, etc. After the plasma in the blood bag is stratified, the pressure of the plasma extractor can squeeze out different components of the blood from top to bottom.

Features:

- * Manual separation, easy to operate.
- * Using a transparent splint, it is easy to observe the separation of plasma and red blood cells.
- * The body is made of 304 brushed stainless steel, which is beautiful and easy to clean and disinfect.

Technical Parameters:

Model	BJPX-FJ
Body Material	Stainless Steel
Clamping Force	≥20N
Applicable Blood Bag	100ml,200ml,300ml,400ml
Net Weight	2.5kg
External Size	170*280*250mm
Packing Size	380*260*290mm
Gross Weight	3.5kg